



Explore Japan: Tokyo Pulse, Heritage Towns, and the Okinawa Blue Zone

May 9th – May 24th, 2026

Main Tour (Day 1 to Day 11)

TOUR PRICE: US\$4998 SINGLE SUPPLEMENT: US\$1250

Okinawa Extension (Day 11 to Day 16)

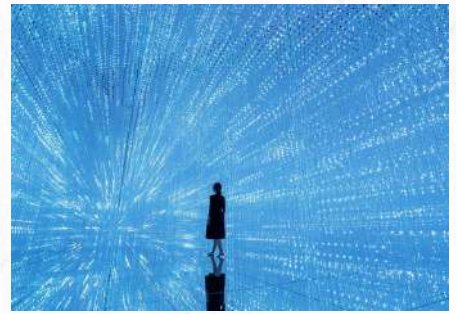
TOUR PRICE: US\$4698 SINGLE SUPPLEMENT: US\$560

AJT
All Japan Tours

Explore Japan, where every moment is crafted to give you moments to discover and enjoy the warm, welcoming heart of this incredible country. In Tokyo, explore the immersive worlds of TeamLab Planets, savor a comforting vegan ramen lunch, and wander Kappabashi Kitchen Street with its endless culinary delights. Share smiles and sushi as it glides by on the conveyor belt, a fun introduction to Japan's playful side.

In Nagano, the spring landscape of Yudanaka at Jigokudani Monkey Park comes alive with playful macaques. Watch them interact, groom, and explore their forested home and delight in their lively and curious charm. Walk the historic Nakasendo Road from Magome to Tsumago, where traditional villages along a time-honored path enchant you with stories of centuries past, and an evening at a local inn embraces guests with a welcome rooted in tradition.

Extend your adventure to Okinawa, where island life unfolds with a welcoming spirit. Explore the grandeur of Shuri Castle, the quiet reverence of Tamaudun Mausoleum, and the lively energy of Kokusaidori and Makishi Public Market. Descend into the mysterious beauty of Gyokusendo Cave and stroll through the lush Southeast Botanical Gardens. Experience sacred Sefa-Utaki, reflect at the Peace Memorial Park, and enjoy the heartfelt performance of Ryukyuan dance with Okinawan Dinner. Marvel at the wondrous variety of marine life at Churaumi Aquarium, and feel the ocean's embrace while snorkeling at Cape Maeda, also called the Blue Cave. From bustling cities to serene forests and sunlit islands, every step of this journey embodies omotenashi: Japan's spirit of thoughtful hospitality, creating opportunities to make unforgettable memories.



What's included

- 10-night accommodation for the main tour and 5-night accommodation for the Okinawa Extension.
- Meet and greet upon arrival at Narita or Haneda Airport
- Airport transfers on arrival and departure
- Transportation, meals & admission fees listed in the itinerary



What's NOT included

- International Airfares
- Meals that are not included in the itinerary.
- Travel Insurance
- Alcoholic beverages and soft drinks
- Personal expenses such as telephone and laundry bills



Deposit

We require a US\$200 deposit per person to hold the space and the final payment is due 2 months prior to departure.

We accept credit cards, check, and wire transfer payments.



Cancellation Policy

You may cancel the Reservation in writing at any time. If you cancel the Reservation or fail to pay the price in accordance with the payment terms above, then All Japan Tours reserves the right to charge cancellation fees as follows:

- More than 60 days before Departure Date: Deposit Only
- 30 days to 59 days before Departure Date: 50% of the price
- 15 days to 29 days before Departure Date: 75% of the price
- 14 days or less before Departure Date: 100% of the price



ITINERARY

Day 1 5/9/2026

Airport Shared
Shuttle

Narita or Haneda Airport - Hotel
Meals: Not included

Welcome to Tokyo!

You will be met at the arrival gate by
your driver holding an "All Japan
Tours" sign and taken to the hotel.



Sunshine City Prince Hotel (SGL 16.6㎡ / TWN 20.7㎡)
3 Chome-1-5 Higashiikebukuro, Toshima City, Tokyo
170-8440, Japan
Tel: (+81) 3-3988-1111



Tokyo
Breakfast

Tokyo【TeamLab Planets TOKYO / Lunch on your own at Vegan Ramen UZU Tokyo】

Today, enjoy a visit on your own to teamLab Planets TOKYO (tickets included). This unique art exhibition space uses digital displays to create interactive artworks that take up entire rooms. The art displays are always highly imaginative and are constantly being updated to accommodate the latest artworks. Please be aware that you will need to remove your shoes before entry, and that some exhibits involve walking in knee-deep water or on top of reflective surfaces, so we advise wearing shorts, or pants that can be rolled up above the knee.



teamLab Planets TOKYO



Vegan Ramen UZU Tokyo



Sunshine City Prince Hotel (SGL 16.6㎡ / TWN 20.7㎡)
3 Chome-1-5 Higashiikebukuro, Toshima City, Tokyo 170-8440,
Japan
Tel: (+81) 3-3988-1111

Tokyo
Breakfast

Tokyo【Kappabashi Kitchen Street / Lunch on your own at conveyor belt sushi】

Today, visit the Kappabashi Kitchen Street on your own, where you can find restaurant operating products such as tableware, cutlery, and especially plastic food samples, which are seen on display in restaurant windows throughout the country. Afterwards, enjoy lunch at a conveyor belt sushi restaurant (not included) on your own.



Kappabashi Kitchen Street



Conveyor belt sushi restaurant



Plastic food samples



Sunshine City Prince Hotel (SGL 16.6 m2 / TWN 20.7 m2)
3 Chome-1-5 Higashiikebukuro, Toshima City, Tokyo 170-8440, Japan
Tel: (+81) 3-3988-1111

Tokyo - Yudanaka
Breakfast / Dinner

Tokyo - Yudanaka

Notes: Please store your big baggage at the hotel and pack your essentials for 4 nights in a small bag to carry with you.

After breakfast, make your own way to Tokyo Station by local train and board the bullet train to Nagano (Ordinary Class Train Tickets Included / we will provide full instructions in advance).

From Nagano Station, continue to Yudanaka Onsen on your own by local train (train tickets are not included).

Tonight, enjoy Onsen and Vegan Dinner at the Ryokan.



Bullet train



Yudanaka Onsen



Shibu Hotel (Japanese Style Room / Vegan Breakfast & Dinner)
2173 Hirao, Yamanochi, Shimotakai District, Nagano 381-0401,
Japan
Tel: (+81) 269-33-2551

Yudanaka
Breakfast / Dinner

Yudanaka【Snow Monkey Park on your own】

After breakfast, head to the famous onsen baths of the Snow Monkey Park on your own by taxi.

Hundreds of curious monkeys troop down through the mountain forests to bath in the natural hot springs, creating a picturesque scene.

Again tonight, enjoy Onsen and Vegan Dinner at the Ryokan.



Snow Monkey Park



Shibu Hotel (Japanese Style Room / Vegan Breakfast & Dinner)
2173 Hirao, Yamanochi, Shimotakai District, Nagano 381-0401,
Japan
Tel: (+81) 269-33-2551

Yudanaka - Nagiso Breakfast / Dinner

Yudanaka - Nagiso

After breakfast, make your own way to Yudanaka Onsen Station and take the local train to Nagano (train tickets are not included).

On your arrival, enjoy lunch on your own and go souvenir shopping at Nagano station.

In the afternoon, transfer to Nagiso on your own (Ordinary Class Train Tickets Included).

Tonight, enjoy Private Onsen and Kaiseki Dinner at the Ryokan.



Local train



Nagano station



Taoya Kisoji (Japanese Style Room)
2278 Azuma, Nagiso, Kiso District, Nagano 399-5302, Japan
Tel: (+81) 50-3615-3456



Nagiso - Magome - Tsumago – Nagiso
Breakfast / Dinner

Old Nakasendo Road 【Walk from Magome to Tsumago (9 km/3 hrs)】

Today, you will transfer to Magome by local train & Bus.

Then, walk from Magome to Tsumago (9 km / 3 hours).

Today, you will walk from Magome to Tsumago on the Old Nakasendo Road, which was once the main route used by travelers during the Edo period. The road between these two towns is one of the Nakasendo's most well-preserved sections – a mix of dirt path and cobblestone, and the post towns of Magome and Tsumago have been continually maintained in their traditional Edo period style.

After your arrival in Tsumago, we transfer from there back to Nagiso.



Old Nakasendo Road



Taoya Kisoji (Japanese Style Room)
2278 Azuma, Nagiso, Kiso District, Nagano 399-5302, Japan
Tel: (+81) 50-3615-3456



Magome

Nagiso - Tokyo Breakfast

Nagiso - Tokyo【Transfer on your own to Tokyo, Free for Leisure in the Afternoon】

Make your own way to Nagiso Station by shuttle bus and take the JR trains to Tokyo.

(Ordinary Class Train Tickets Included / we will provide full instructions in advance).

Upon arrival, transfer to Sunshine City Prince Hotel on your own by local train.

You are free for leisure in the afternoon.



Local train



Sunshine City Prince Hotel



Sunshine City Prince Hotel (SGL 16.6㎡ / TWN 20.7㎡)
3 Chome-1-5 Higashiikebukuro, Toshima City, Tokyo
170-8440, Japan
Tel: (+81) 3-3988-1111



Tokyo

Day 9 5/17/2026

Transportation:
Not included

Tokyo
Breakfast

Tokyo【Free for leisure】

You have the day free for leisure on your own.

Sunshine City Prince Hotel (SGL 16.6㎡ / TWN 20.7㎡)

3 Chome-1-5 Higashiikebukuro, Toshima City, Tokyo 170-8440, Japan

Tel: (+81) 3-3988-1111



pixta.jp - 22355568



Day 10 5/18/2026

Transportation:
Not included

Tokyo
Breakfast

Tokyo【Free for leisure】

You have the day free for leisure on your own.

Sunshine City Prince Hotel (SGL 16.6㎡ / TWN 20.7㎡)

3 Chome-1-5 Higashiikebukuro, Toshima City, Tokyo 170-8440, Japan

Tel: (+81) 3-3988-1111



Day 11 5/19/2026

Airport Shared
Shuttle

Tokyo - Narita or Haneda Airport
Breakfast

After breakfast, you are free for leisure until it is
time to transfer to the airport for departure.

Thank you for traveling with All Japan Tours!



AJT
All Japan Tours

All Japan Tours

337 N. Vineyard Ave, Suite 215

Ontario, CA 91764, USA

Tel: 1-909-988-8885 Email: info@alljapantours.com

www.alljapantours.com

Day 11 5/19/2026

Airport Shared Shuttle /
Private Van with Private
Guide

Tokyo - Haneda Airport - Naha Airport
Breakfast

Okinawa Tour Extension

Tokyo - Haneda Airport - Naha Airport

After breakfast, you are free for leisure until it is time to transfer to the airport for your domestic flight to Okinawa (Economy flight tickets included).

Upon arrival, meet your driver at the airport and transfer to your hotel.



Hotel JAL City Naha
1-3-70 Makishi, Naha City, Okinawa, 900-0013, Japan
Tel: 098-866-2580

Okinawa Breakfast

Okinawa【Former Japanese Navy Underground Headquarters / Okinawa Cooking Class / Awamori Distillery Tour / Kokusaidori / Makishi Public Market】

After breakfast, we visit the Former Japanese Navy Underground Headquarters to walk through tunnels that once served as a command center during WWII and gain insight into Okinawa's wartime history.

Next, you will learn to cook a simple local dish in an Okinawan cooking class.

From there, we tour an Awamori distillery to see how Okinawa's signature spirit is made.

We then browse Kokusaidori, a shopping street and entertainment center bursting with modern Okinawa culture, featuring shops and restaurants with broad international appeal.

While there, we explore Makishi Public Market, where local vendors offer fresh produce, seafood, and everyday Okinawan favorites.



Former Japanese Navy Underground
Headquarters



Awamori



Makishi Public Market



Hotel JAL City Naha
1-3-70 Makishi, Naha City, Okinawa, 900-0013, Japan
Tel: 098-866-2580

Okinawa
Breakfast / Dinner

Okinawa【Sefa-Utaki / Okinawa World - Gyokusendo Cave / Peace Memorial Park / Himeyuri Peace Museum / Ryukyu Dance and Okinawan Dinner Show】

In the morning, we visit Sefa Utaki, one of the most sacred sites in the Ryukyu Kingdom, where stone pathways and forested overlooks create a peaceful and spiritual atmosphere.

We proceed by exploring the underground world of Gyokusendo Cave at Okinawa World, filled with limestone formations and illuminated passageways.

Next, we visit the Peace Memorial Park, which remembers the high cost of the Battle of Okinawa and of WW2. It features the Cornerstone of Peace, which records the names of all the combatants lost in the battle, regardless of nationality.

Near the Peace Park is the Himeyuri Peace Museum and Monument, which recalls the bravery and sacrifice of 222 female high school students and 18 teachers who served as front-line nurses during the battle.

We end the day with an immersive Ryukyu dance and Okinawan dinner show, complete with traditional music, colorful costumes, and local dishes.



Hotel JAL City Naha

1-3-70 Makishi, Naha City, Okinawa, 900-0013, Japan

Tel: 098-866-2580



Sefa Utaki



Gyokusendo Cave



Himeyuri Peace Museum

Okinawa
Breakfast

Okinawa【Tamaudun Mausoleum / Shuri Castle / Southeast Botanical Gardens / Mihama American Village】

After breakfast, we explore the royal legacy of the Ryukyu Kingdom at Tamaudun Mausoleum, a UNESCO-listed resting place built for the Ryukyuan kings in the 1500s.

Next, behold the beautiful Shuri Castle, which is a cultural landmark of old Ryukyuan architecture. The exterior of the main hall has been fully rebuilt after a fire in 2019 destroyed it (and several other buildings), and the interior is expected to be completed next year.

Afterwards, we will wander through the Southeast Botanical Gardens, home to tropical flowers, towering palms, and peaceful walking paths.

Lastly, we visit Mihama American Village, a lively seaside area filled with shops, cafés, and bright evening lights that blend Okinawan charm with a playful resort-town atmosphere.



Tamaudun Mausoleum



Shuri Castle



Mihama American Village



Hotel JAL City Naha

1-3-70 Makishi, Naha City, Okinawa, 900-0013, Japan

Tel: 098-866-2580

Okinawa
Breakfast

Okinawa【Okinawa Churaumi Aquarium / Snorkeling at Cape Maeda - Blue Cave】

Today, we visit Okinawa Churaumi Aquarium, home to one of the world's largest tanks and famous whale sharks gliding alongside manta rays. Learn about Okinawa's rich marine ecosystems as you explore coral displays and deep-sea creatures.

Then, we head to Cape Maeda for snorkeling at the Blue Cave, where the sunlight entering the cave reflects off of the sea bed and makes the water seem to shimmer with blue light. This area is known for its calm coves, schools of tropical fish, and some of the clearest waters in Okinawa that are enjoyed by beginners and seasoned snorkelers alike.



Okinawa Churaumi Aquarium



Cape Maeda



Hotel JAL City Naha

1-3-70 Makishi, Naha City, Okinawa, 900-0013, Japan

Tel: 098-866-2580

Day 16 5/24/2026

Private Van
with NO Guide

Naha Airport
Breakfast

After breakfast, you are free for leisure until it is time to transfer to Naha Airport for departure.



Thank you for traveling with All Japan Tours!



AJT
All Japan Tours

All Japan Tours
337 N. Vineyard Ave, Suite 215
Ontario, CA 91764, USA

Tel: 1-909-988-8885 Email: info@alljapantours.com
www.alljapantours.com